

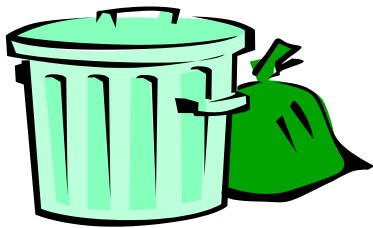
HANOVER BOROUGH MANDATORY RESIDENTIAL REFUSE & RECYCLING COLLECTION—2024
44 FREDERICK STREET HANOVER, PA 17331
(717) 637-3877

MANDATORY RESIDENTIAL REFUSE COLLECTION AND MONTHLY CURBSIDE RECYCLING MEMO

Residential refuse service is provided for a maximum of three (3) 30-gallon cans or bags. The service also includes mandatory monthly curbside recycling of bi-metal/aluminum, corrugated cardboard/paperboard, and newspapers. Please see the attached notice for monthly recycling collection dates on the second full week of each month.

PLEASE NOTE — THERE WILL BE NO SERVICE STICKERS ISSUED FOR RESIDENTIAL REFUSE & RECYCLING COLLECTION SERVICE FOR 2024!

Fees for residential refuse service are **\$78.00/qtr. or \$312.00/yr.** Annual fees, if paid no later than February 20th, will have a 5% discount applied, making the fee **\$296.40/yr.** **NOTE—NO REFUNDS WILL BE GIVEN ON ANY REFUSE PAYMENTS!**



EXTRA TAGS CAN BE PURCHASED AT THE BOROUGH OFFICE FOR **\$4.00** FOR EACH CAN or BAG OVER THE THREE (3) 30-GALLON CAN LIMIT.



PLASTICS (#1, #2, AND #5 ONLY), GLASS BOTTLES (BOTTLES ONLY - NO OTHER GLASS OR GLASSWARE) AND QUALITY PAPER CAN BE DROPPED OFF AT THE RECYCLING CENTER AT 139 NORTH STREET.

MONTHLY MANDATORY HOME CURBSIDE COLLECTION OF THE FOLLOWING RECYCLABLES: ALUMINUM/BI-METAL CANS (can be co-mingled in same bin), NEWSPAPER (needs to be bundled and kept dry), AND CORRUGATED CARDBOARD/PAPERBOARD (which must be broken down and bundled). THESE ITEMS MUST BE PLACED AT THE SAME LOCATION YOU PLACE YOUR REGULAR REFUSE ON YOUR DESIGNATED DAY FOR YOUR MONTHLY RECYCLING PICKUP. (Please see the attached schedule). PLEASE NOTE—THERE IS A DIFFERENT TRUCK TO PICK UP EACH ITEM SEPARATELY.

Electronics recycling is MANDATORY and FREE to all York County residents. All electronics must be recycled at Penn Township's Recycling Center at 1020 Wilson Avenue in Hanover, PA, Monday-Friday 8AM-4:15PM, and Saturday 8AM-3PM.

RECYCLE AND SAVE THE ENVIRONMENT: While limited curbside collection occurs monthly, aluminum/bi-metal cans, newspaper, cardboard/paperboard **as well as plastics (#1, #2, and #5 ONLY), glass (clear and colored), and all quality paper/magazines/phone books/etc.** can be taken to the Public Works Recycling Center at 139 North St. on Monday-Friday 6AM-3PM and Saturday 7AM -12PM. A typical household generates almost one ton of refuse a year; every item that can be recycled promotes environmental savings and conservation and helps control costs of refuse collection and disposition. **THANK YOU FOR YOUR EFFORTS!**

HANOVER BOROUGH MANDATORY RESIDENTIAL REFUSE & RECYCLING COLLECTION—2024
ANSWERS TO COMMONLY ASKED QUESTIONS

1. **SPECIAL OR EXTRA PICKUPS** - All special/extra pickups require scheduling with the Public Works Department and payment prior to pickup. Please phone the Public Works Department at (717) 632-3939, to make pickup arrangements. Large or bulky items can be picked up on request for a charge based on volume and time required for service. **PLEASE REMEMBER TO REMOVE REFRIGERATOR AND STOVE DOORS ON APPLIANCES PLACED OUT FOR SPECIAL PICKUP TO AVOID TRAPPING CHILDREN.** Tires, multiple-gallon buckets, refuse cans, mattresses, box springs, and limbs/brush (“tree trimming materials”) are all considered SPECIAL PICKUP items, and charges for disposal must be scheduled and prepaid by the property owner prior for removal by the Public Works Department.
2. **LEAF PICKUP** - Leaves are collected as part of your refuse service in the fall season during the months of **October through December.** **DO NOT BAG YOUR LEAVES!** The leaves should be raked to your front curb area to be picked up by the leaf collection machine. **DO NOT PLACE BRUSH, WEEDS, OR GRASS IN/NEAR THE GUTTER FOR PICKUP!**
3. **ITEMS RECYCLED CURBSIDE** - Bi-metal/aluminum cans, newspaper, and corrugated cardboard/paperboard are SEPARATELY recycled curbside on a monthly basis. Please see the included schedule for pickup day. **PLEASE NOTE, ON RECYCLING DAY, THERE WILL BE A DIFFERENT TRUCK COLLECTING EACH ITEM SEPARATELY.**
4. **OTHER ITEMS RECYCLED** - In addition to the items in #3, we also accept **plastics (#1, #2, and #5 ONLY), glass (bottles only, no other glass or glassware), and all quality paper/magazines/phone books/junk mail/flyers/etc.** at the Public Works Recycling Center at 139 North St. on Monday-Friday from 6AM-3PM and on Saturday from 7AM-12PM.
5. **FOLLOWING HEAVY STORMS** - Fallen brush will be collected free of charge if stacked, not bundled, and Public Works is notified within five (5) days of the storm damage occurring. (Collection for brush, other than storm damage, can be requested by contacting the Public Works Department at (717) 632-3939. See #1 above for related prepayment and scheduling provisions.)
6. **GARDEN WASTE** - Pickup will be **COLLECTED WITH YOUR RECYCLABLES DURING THE SECOND FULL WEEK OF MAY AND OCTOBER.** **STICKERS WILL NOT BE REQUIRED FOR COLLECTION!!** Collectibles must be placed in a sealed paper or plastic bag. Bags containing rock, grass, tree limbs, or ground will not be accepted. Residents may utilize the Public Works Recycling Center at 139 North Street (hours on reverse side) for branches, tree, shrub trimming and pulpy vines.
7. **CHRISTMAS TREES** - **PICKED UP WITHOUT ADDED CHARGE IN JANUARY.** Please remove plastic, wire, and metal from trees to prevent damage to the tree chipping equipment and personnel. Place trees curbside at the same location where you place regular refuse.
8. **HOLIDAY PICKUP SCHEDULE** - When a Holiday is recognized on a regular pick up day, trash pick up will be moved to the **WEDNESDAY OF THAT WEEK.** All other collection remains on regular schedule. (Applicable holidays include New Years Day, Memorial Day, July 4th, Labor Day, Thanksgiving, and Christmas Day.)
9. **CONSTRUCTION WASTE** - **CANNOT BE DISPOSED OF BY THE BOROUGH.** Make sure your contractor has a means of disposing same.
10. **ELDERLY AND HANDICAPPED** - Residents who wish to have recyclables hauled to North Street can contact **BOB LARSEN at (717) 632-5155** to arrange pickup by Boy Scout volunteers.